

Underbody Equipment

Upperbody Equipment

Internal Equipment

Equipment installations									
No	Description	Overall Dimensions (mm)			Weight (kg)	Quantity			Electric
		x	y	z		Dual	Diesel	Electric	
01	Traction Converter (Including Auxiliary)	2700	1050	2000	1850	2	2	2	
02	Traction Motor Cooling	1000	1050	1900	500	2	2	2	
03	Pantograph	2600	1300	600	140	2	-	-	
04	Pneumatic Panel	1075	550	1500	170	1	1	1	
05	Diesel Motor Air Filter	1465	1800	550	1	1	1	-	
06	Diesel Engine Cooling (380kg Coolant) Full	2330	1800	2580	1980	1	1	-	
07	Diesel Engine (550kg Oil) Full	3250	1800	2220	12050	1	1	-	
08	Generator with Rectifier	2080	1800	2020	6850	1	1	-	
09	Battery & Diesel Battery	900	2400	600	1000	1	1	-	
10	Main Air Production	1750	1000	650	400	1	1	2	
11	Auxiliary Air Production	850	500	400	80	1	-	-	
12	Main Air Reservoir Tank 430L	1700	800	600	150	2	2	2	
13	Pneumatic Package (270L air reservoirs)	1275	500	1500	220	1	1	-	
14	Brake Resistor	1200	1200	500	500	1	1	-	
15	Voltage and Current Meter	420	420	500	30	1	-	-	
16	Battery	500	2350	600	600	-	-	1	
17	Sand Box 40L (Empty)	360	850	700	95	8	8	8	
18	Transformer	2300	2500	1050	7800	1	-	-	
19	Diesel Tank 4000L (Empty)	1500	2500	1100	700	1	1	-	
20	Ure Tank 40L (Empty)	250	1900	960	75	1	1	-	
21	Driver HVAC	800	570	900	125	2	2	2	
22	Diesel Motor After Treatment	3850	1800	550	1550	-	1	-	
23	Last Mile Module	1000	1900	6000	-	-	-	1	
24	Antenna Set	500	1600	250	50	2	2	2	
25	ATIS Antenna	500	500	500	10	2	2	2	
26	Emergency Antenna	390	450	150	15	2	2	2	
27	Lubricating Device (Full)	350	350	500	50	2	2	2	
28	Surge Arrester	320	260	435	15	3	-	-	
29	Vacuum Circuit Breaker & Earthing Switch	1070	430	750	104	1	-	-	
30	Voltage Meter	390	280	400	20	1	-	-	
31	Windscreen Wiper Water Tank (Empty)	350	360	480	10	2	2	2	
32	Side Headlight	350	350	350	10	4	4	4	
33	Top Headlight	350	350	350	5	2	2	2	
34	Wiper Blade	55	50	800	3	4	4	4	
35	Horns	440	380	200	2	2	2	2	
36	Bus Contactor & Frequency Filters	1000	350	600	250	1	-	-	
37	Whistle	300	300	300	8	2	2	2	
38	Transformer & Converter Cooling	1150	1050	1900	700	2	-	-	
39	Traction Converter Cooling	1150	1050	1900	700	-	2	-	
40	Expansion Reservoir	400	500	1500	100	1	-	-	
64	Portable Lamp Box	200	160	200	1	4	4	4	
65	Scotch Block	100	160	300	1	4	4	4	

Electrical Panels									
No	Description	Overall Dimensions (mm)			Weight (kg)	Quantity			Electric
		x	y	z		Dual	Diesel	Electric	
41	EC1 Electrical Cabinet & Battery Charger	1050	1050	1900	400	1	-	-	
42	EC2 Electrical cabinet	1050	1050	1900	600	1	1	1	
43	EC3 Cab Electrical Panel	300	1040	1900	50	1	1	1	
44	EC4 Cab Electrical Panel	300	1040	1900	50	1	1	1	
45	ECMN Electrical Cabinet	1750	500	1250	200	1	1	-	
46	EC1 Electrical Cabinet & Battery Charger	2135	1050	1900	800	-	-	1	

Mechanical Installations									
No	Description	Overall Dimensions (mm)			Weight (kg)	Quantity			Electric
		x	y	z		Dual	Diesel	Electric	
61	Hook	1165	410	550	158	2	2	2	
62	Buffer	755	660	360	287	4	4	4	
63	Obstacle Deflector	1100	2225	390	150	2	2	2	

Bogies									
No	Description	Overall Dimensions (mm)			Weight (kg)	Quantity			Electric
		x	y	z		Dual	Diesel	Electric	
71	Motor Bogie Type 1	2630	6880	1310	27500	1	1	1	
72	Motor Bogie Type 2	2630	6880	1310	27500	1	1	1	

Other									
No	Description	Overall Dimensions (mm)			Weight (kg)	Quantity			Electric
		x	y	z		Dual	Diesel	Electric	
84	Upper Skirt	6550	2900	550	50	2	2	2	
85	Lower Skirt	2000	2700	275	50	2	2	2	
86	Panto camera	50	50	50	1	2	-	-	
87	Camera	50	50	50	1	12	12	10	
88	Cab Windows	600	50	700	30	4	4	4	
89	Ballast Diesel	-	-	-	8600	-	-	-	
90	Ballast Electrical	-	-	-	25100	-	-	-	
91	Cab Mask	2970	2535	2965	300	2	2	2	
92	Internal Door	60	450	1900	40	6	6	-	
93	Driver Seat	580	580	1500	85	2	2	2	
94	Windscreen	1100	1650	1225	100	2	2	2	
95	Storage Area	350	1040	1900	50	2	2	2	
96	Driver Desk	850	2535	1200	440	2	2	2	
97	External Cab Door	520	62	1680	110	4	4	4	
98	Internal Cab Door	60	575	1900	60	2	2	2	
99	Assistant Seat	590	580	1500	85	2	2	2	

Fire barrier	
No	Description
F	Fire barrier wall E15 I15 (with hinged door)

REV.	REVISION DESCRIPTION
00	ISSUE
01	-
02	-
03	-
04	-
05	-
06	-
07	-

POS. C.I.L.	DESCRIPTION	SUPPLIER DRAWING CODE	REV	SUPPLIER MATERIAL TREATMENT	QTY	WEIGHT
SIGNATURES						
1	DRAWN	2	CHECKED	TURASAS		
3	APPROVED	4	DATE	CRITICALITY LEVEL	OVERALL COARSE DIMENSION	
1	W. PROVISION	2	W. DATE	SCALE	SIZE	SHEET 1/1
1	L. SIGNATURE	4	21/11/2024	UNIT OF MEASURE	NP	WEIGHT
1	-	2	-	THERMAL TREATMENT	SURFACE TREATMENT	
1	-	2	-	TITLE		
1	-	2	-	CoCo Loco		
1	-	2	-	Vehicle General Layout Electric		
1	-	2	-	JOB NUMBER		
1	-	2	-	KEY PLAN REFERENCE		
1	-	2	-	DRAWING CODE		
1	-	2	-	012GX0000201-000		
1	-	2	-	REVISION		
1	-	2	-	01(A)		

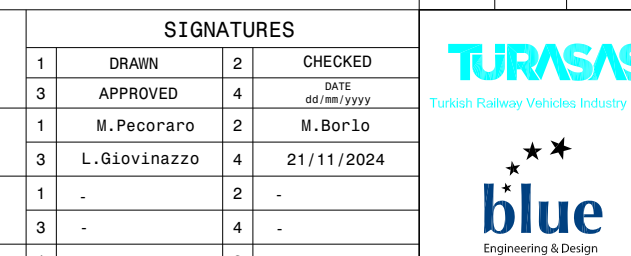
\*opposite y side (x,z same position)





REV.	REVISION DESCRIPTION	1	2	3	4	5	6	7	8	9	10	11	12	13	14	15	16	17	18	19	20
00	ISSUE																				
01	-																				
02	-																				
03	-																				
04	-																				
05	-																				
06	-																				
07	-																				

POS.	C.L.	DESCRIPTION	SUPPLIER DRAWING CODE	REV.	SUPPLIER MATERIAL TREATMENT	QTY	WEIGHT (GROSS PER UNIT)



CRITICALITY LEVEL	SCALE	SIZE	SHEET	UNIT OF MEASURE	NP	WEIGHT	CUSTOMER DRAWING CODE
	-	A0	1/1			-	

TITLE	HRG	THICKNESS
CoCo Loco		

DRAWING CODE	REVISION	01 (A)
012GX0000201-000		

CAD DRAWING - MANUAL CHANGES ARE FORBIDDEN